



## Cleaved-C1r LC (I464) Polyclonal Antibody

Cat #: ABP50014

Size: 30µl /100µl /200µl

### Product Information

	<b>Product Name:</b> Cleaved-C1r LC (I464) Polyclonal Antibody		
	<b>Applications:</b> WB, ELISA		<b>Isotype:</b> Rabbit IgG
	<b>Reactivity:</b> Human		
<b>REF</b>	<b>Catalog Number:</b> ABP50014	<b>LOT</b>	<b>Lot Number:</b> Refer to product label
	<b>Formulation:</b> Liquid		<b>Concentration:</b> 1 mg/ml
	<b>Storage:</b> Store at -20°C. Avoid repeated freeze / thaw cycles.		<b>Note:</b> Contain sodium azide.

**Background:** C1R (Complement C1r Subcomponent) is a Protein Coding gene. Diseases associated with C1R include immunodeficiency due to an early component of complement deficiency and c1r/c1s deficiency, combined. Among its related pathways are Complement and coagulation cascades and Immune System. GO annotations related to C1R include calcium ion binding and serine-type peptidase activity. An important paralog of C1R is HP.C1r B chain is a serine protease that combines with C1q and C1s to form C1, the first component of the classical pathway of the complement system. C1R aligns across a gap in the GRCh38 reference genome assembly, and therefore, the 5' end of C1R was annotated on NT\_009714.18 and the 3' end was annotated on NT\_009759.17 in NCBI's Homo sapiens Annotation Release 106.

**Application Notes:** Optimal working dilutions should be determined experimentally by the investigator. Suggested starting dilutions are as follows: WB (1:500-1:2000), ELISA (1:20000). Not yet tested in other applications.

**Storage Buffer:** PBS containing 50% Glycerol, 0.5% BSA and 0.02% Sodium Azide.

**Storage Instructions:** Stable for one year at -20°C from date of shipment. For maximum recovery of product, centrifuge the original vial after thawing and prior to removing the cap. Aliquot to avoid repeated freezing and thawing.

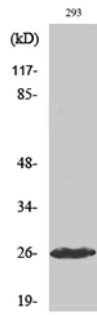


Fig. Western Blot analysis of various cells using Cleaved-C1r LC (I464) Polyclonal Antibody.

**Note:** The product listed herein is for research use only and is not intended for use in human or clinical diagnosis. Suggested applications of our products are not recommendations to use our products in violation of any patent or as a license. We cannot be responsible for patent infringements or other violations that may occur with the use of this product.