



## PDK1 Polyclonal Antibody

Cat #: ABP0114

Size: 100µl

### Product Information

|   |  |   |   |
|---|--|---|---|
|   | <b>Product Name:</b> PDK1 Polyclonal Antibody                        |   |   |
|   | <b>Applications:</b> WB, IF, IHC-P, ELISA                            |   | <b>Isotype:</b> Rabbit IgG                |
|   | <b>Reactivity:</b> Human, Mouse, Rat                                 |   |   |
| <b>REF</b>  | <b>Catalog Number:</b> ABP0114                                       | <b>LOT</b>  | <b>Lot Number:</b> Refer to product label |
|   | <b>Formulation:</b> Liquid   |   | <b>Concentration:</b> 1 mg/ml             |
|  | <b>Storage:</b> Store at -20°C. Avoid repeated freeze / thaw cycles. |  | <b>Note:</b> Contain sodium azide.        |

**Background:** PDPK1 (3-Phosphoinositide Dependent Protein Kinase 1) is a Protein Coding gene. Among its related pathways are Platelet activation, signaling and aggregation and Gene Expression. GO annotations related to PDPK1 include transferase activity, transferring phosphorus-containing groups and protein tyrosine kinase activity.

**Application Notes:** Optimal working dilutions should be determined experimentally by the investigator. Suggested starting dilutions are as follows: WB (1:500-1:2000), IF (1:50-1:200), IHC-P (1:100-1:300), ELISA (1:10000). Not yet tested in other applications.

**Storage Buffer:** PBS, pH 7.4, containing 0.02% Sodium Azide as preservative and 50% Glycerol.

**Storage Instructions:** Stable for one year at -20°C from date of shipment. For maximum recovery of product, centrifuge the original vial after thawing and prior to removing the cap. Aliquot to avoid repeated freezing and thawing.

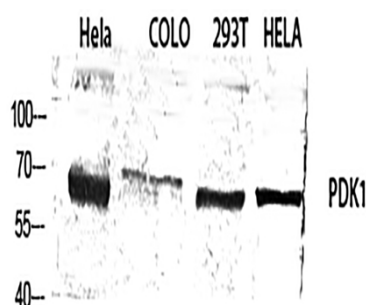


Fig.1. Western blot analysis of HeLa (1), Colo (2), 293T (3), HeLa (4), diluted at 1:1000.

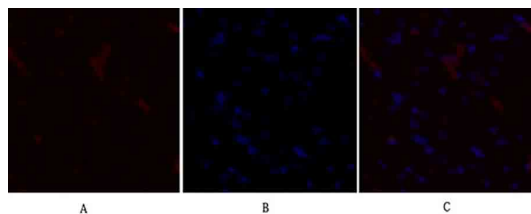


Fig.2. Immunofluorescence analysis of rat heart tissue. 1, PDK1 Polyclonal Antibody (red) was diluted at 1:200 (4°C, overnight). 2, Cy3 Labeled secondary antibody was diluted at 1:300 (room temperature, 50min). 3, Picture B: DAPI (blue) 10min. Picture A: Target. Picture B: DAPI. Picture C: merge of A+B.

**Note:** The product listed herein is for research use only and is not intended for use in human or clinical diagnosis. Suggested applications of our products are not recommendations to use our products in violation of any patent or as a license. We cannot be responsible for patent infringements or other violations that may occur with the use of this product.