



Cleaved PARP Monoclonal Antibody

Cat #: ABM0043

Size: 100µl

Product Information

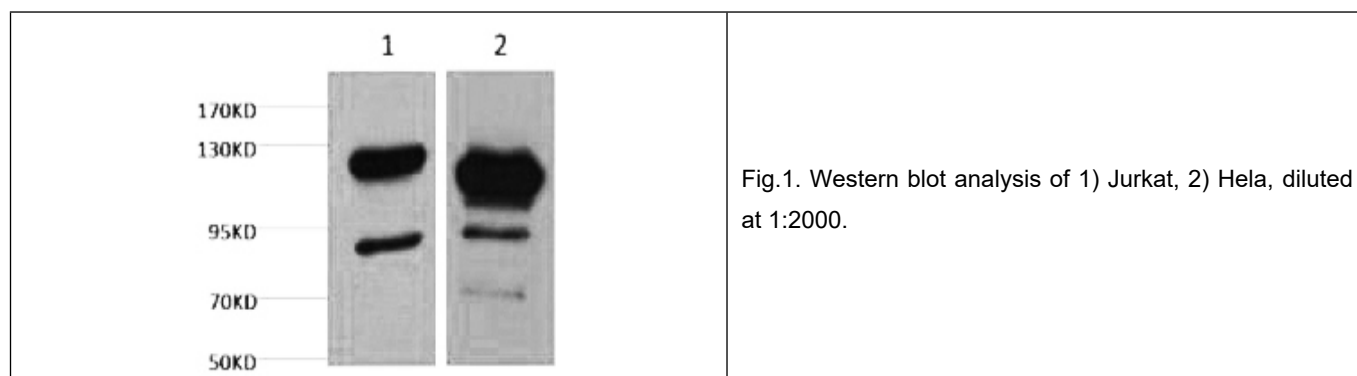
| | | | |
|---|--|---|---|
| | Product Name: Cleaved PARP Monoclonal Antibody | | |
| | Applications: WB | | Isotype: Mouse IgG1 |
| | Reactivity: Human | | |
| REF | Catalog Number: ABM0043 | LOT | Lot Number: Refer to product label |
| | Formulation: Liquid | | Concentration: 1 mg/ml |
|  | Storage: Store at -20°C. Avoid repeated freeze / thaw cycles. |  | Note: Contain sodium azide. |

Background: PARP1 encodes a chromatin-associated enzyme, poly (ADP-riboseyl)transferase, which modifies various nuclear proteins by poly (ADP-riboseyl)ation. The modification is dependent on DNA and is involved in the regulation of various important cellular processes such as differentiation, proliferation, and tumor transformation and also in the regulation of the molecular events involved in the recovery of cell from DNA damage. In addition, poly (ADP-ribose) polymerase 1 may be the site of mutation in Fanconi anemia, and may participate in the pathophysiology of type I diabetes.

Application Notes: Optimal working dilutions should be determined experimentally by the investigator. Suggested starting dilutions are as follows: WB (1:1000-1:3000).

Storage Buffer: PBS, pH 7.4, containing 0.02% Sodium Azide as preservative and 50% Glycerol.

Storage Instructions: Stable for one year at -20°C from date of shipment. For maximum recovery of product, centrifuge the original vial after thawing and prior to removing the cap. Aliquot to avoid repeated freezing and thawing.



Note: The product listed herein is for research use only and is not intended for use in human or clinical diagnosis. Suggested applications of our products are not recommendations to use our products in violation of any patent or as a license. We cannot be responsible for patent infringements or other violations that may occur with the use of this product.