



## α Lactalbumin Monoclonal Antibody

Cat #: ABM0034

Size: 100μl

### Product Information

|   |  |   |   |
|---|--|---|---|
|   | <b>Product Name:</b> α Lactalbumin Monoclonal Antibody               |   |   |
|   | <b>Applications:</b> WB, IF, IHC-P                                   |   | <b>Isotype:</b> Mouse IgG1                |
|   | <b>Reactivity:</b> Human   |   |   |
| <b>REF</b>  | <b>Catalog Number:</b> ABM0034                                       | <b>LOT</b>  | <b>Lot Number:</b> Refer to product label |
|   | <b>Formulation:</b> Liquid   |   | <b>Concentration:</b> 1 mg/ml             |
|  | <b>Storage:</b> Store at -20°C. Avoid repeated freeze / thaw cycles. |  | <b>Note:</b> Contain sodium azide.        |

**Background:** LALBA encodes alpha-lactalbumin, a principal protein of milk. Alpha-lactalbumin forms the regulatory subunit of the lactose synthase (LS) heterodimer and beta 1,4-galactosyltransferase (beta4Gal-T1) forms the catalytic component. Together, these proteins enable LS to produce lactose by transferring galactose moieties to glucose. As a monomer, alpha-lactalbumin strongly binds calcium and zinc ions and may possess bactericidal or antitumor activity. A folding variant of alpha-lactalbumin, called HAMLET, likely induces apoptosis in tumor and immature cells.

**Application Notes:** Optimal working dilutions should be determined experimentally by the investigator. Suggested starting dilutions are as follows: WB (1:1000), IF (1:100-1:200), IHC-P (1:50-1:300).

**Storage Buffer:** PBS, pH 7.4, containing 0.02% Sodium Azide as preservative and 50% Glycerol.

**Storage Instructions:** Stable for one year at -20°C from date of shipment. For maximum recovery of product, centrifuge the original vial after thawing and prior to removing the cap. Aliquot to avoid repeated freezing and thawing.

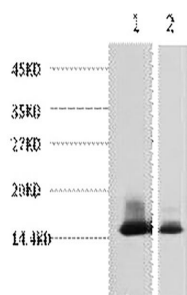


Fig.1. Western blot analysis of 1) Human Milk, 2) Milk, diluted at 1:3000.

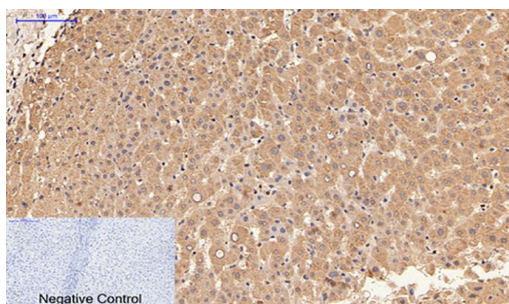


Fig.2. Immunohistochemical analysis of paraffin-embedded human liver tissue. 1,  $\alpha$  Lactalbumin Monoclonal Antibody was diluted at 1:200 (4°C, overnight). 2, Sodium citrate pH 6.0 was used for antibody retrieval (>98°C, 20min). 3, secondary antibody was diluted at 1:200 (room temperature, 30min). Negative control was used by secondary antibody only.

**Note:** The product listed herein is for research use only and is not intended for use in human or clinical diagnosis. Suggested applications of our products are not recommendations to use our products in violation of any patent or as a license. We cannot be responsible for patent infringements or other violations that may occur with the use of this product.