



Galectin-3 Monoclonal Antibody

Cat #: ABM0012

Size: 100µl

Product Information

	Product Name: Galectin-3 Monoclonal Antibody		
	Applications: WB, IF, IHC-P		Isotype: Mouse IgG1
	Reactivity: Human		
REF	Catalog Number: ABM0012	LOT	Lot Number: Refer to product label
	Formulation: Liquid		Concentration: 1 mg/ml
	Storage: Store at -20°C. Avoid repeated freeze / thaw cycles.		Note: Contain sodium azide.

Background: LGALS3 encodes a member of the galectin family of carbohydrate binding proteins. Members of this protein family have an affinity for beta-galactosides. lectin, galactoside binding soluble 3 is characterized by an N-terminal proline-rich tandem repeat domain and a single C-terminal carbohydrate recognition domain. lectin, galactoside binding soluble 3 can self-associate through the N-terminal domain allowing it to bind to multivalent saccharide ligands. lectin, galactoside binding soluble 3 localizes to the extracellular matrix, the cytoplasm and the nucleus. lectin, galactoside binding soluble 3 plays a role in numerous cellular functions including apoptosis, innate immunity, cell adhesion and T-cell regulation. lectin, galactoside binding soluble 3 exhibits antimicrobial activity against bacteria and fungi. Alternate splicing results in multiple transcript variants

Application Notes: Optimal working dilutions should be determined experimentally by the investigator. Suggested starting dilutions are as follows: WB (1:2000), IF (1:100-1:200), IHC-P (1:200).

Storage Buffer: PBS, pH 7.4, containing 0.02% Sodium Azide as preservative and 50% Glycerol.

Storage Instructions: Stable for one year at -20°C from date of shipment. For maximum recovery of product, centrifuge the original vial after thawing and prior to removing the cap. Aliquot to avoid repeated freezing and thawing.

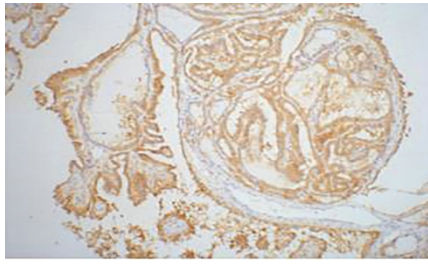


Fig.1. IHC-P staining of Human thyroid tissue paraffin-embedded, diluted at 1:200.

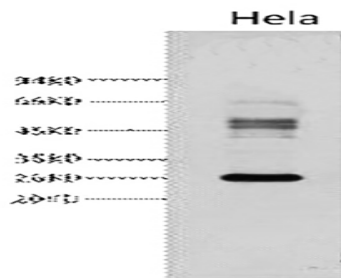


Fig.2. Western blot analysis of Hela, diluted at 1:3000.

Note: The product listed herein is for research use only and is not intended for use in human or clinical diagnosis. Suggested applications of our products are not recommendations to use our products in violation of any patent or as a license. We cannot be responsible for patent infringements or other violations that may occur with the use of this product.