



# Protein Gel Flash Staining Kit

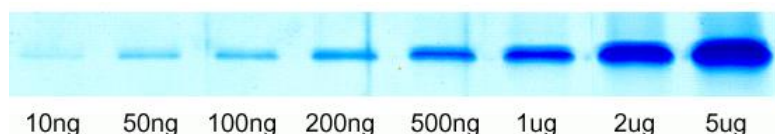
# K21010



## Product Information

	<b>Product Name:</b> Protein Gel Flash Staining Kit		
<b>REF</b>	<b>Catalog Number:</b> K21010	<b>LOT</b>	<b>Lot Number:</b> Refer to vial
	<b>Formulation:</b> Liquid		<b>Size:</b> 100ml/500ml
	<b>Storage:</b> Store at 4-8°C.		<b>Note:</b> Weakly acidic solution.

**Background:** Protein Gel Flash Staining kit is a fast, sensitive, and safe staining solution for visualizing protein bands on polyacrylamide gels. With our exclusive and innovative dye, the kit eliminates extensive solution preparation time and washing procedure, which is completely non-hazardous, and does not require alcohol fixatives or destains. This protein staining delivers a dynamic range of 10 ng to 5 µg within 0.5-1 hour, which is approximately 5-10 times more sensitive than traditional Coomassie R-250 based dyes. Protein Gel Flash Staining Kit is suitable for both native-PAGE gel and SDS-PAGE gel staining, which is supplied as a 5X stock staining reagent.



**Fig.** Various volumes of BSA samples were separated on 10% SDS-PAGE, stained with protein gel flash staining working solution for 30 minutes.

### Manual Notes:

1. Mix deionized or distilled water with 5X stock staining solution to prepare the 1X working solution.
2. Rinse SDS-PAGE gel with three 5-minute washes with water. No need for native-PAGE pre-wash.
3. Add 20-40 ml (or enough to completely cover the gel) of 1X working solution to stain with gentle agitation.

### Application Notes:

1. Large or thick gels require more staining solution or staining time. Gels should be completely immersed in it.
2. Washing step before staining is dedicated to removing of SDS from the gel as SDS interferes with staining.
3. Treating SDS-PAGE gels in fixative solutions (e.g., 40% methanol and 10% acetic acid) for 30 minutes prior to staining generally improves the staining sensitivity.
4. High staining temperature and prolonged staining time improve final staining sensitivity.
5. Wash the gel after staining with water might cause bluish gel background, which however does not interfere with sensitivity and will gradually disappear after few hours.

**Storage Instructions:** Stable for one year at 4-8°C from date of shipment.

**Note:** The product listed herein is for research use only and is not intended for use in human or clinical diagnosis. Suggested applications of our products are not recommendations to use our products in violation of any patent or as a license. We cannot be responsible for patent infringements or other violations that may occur with the use of this product.